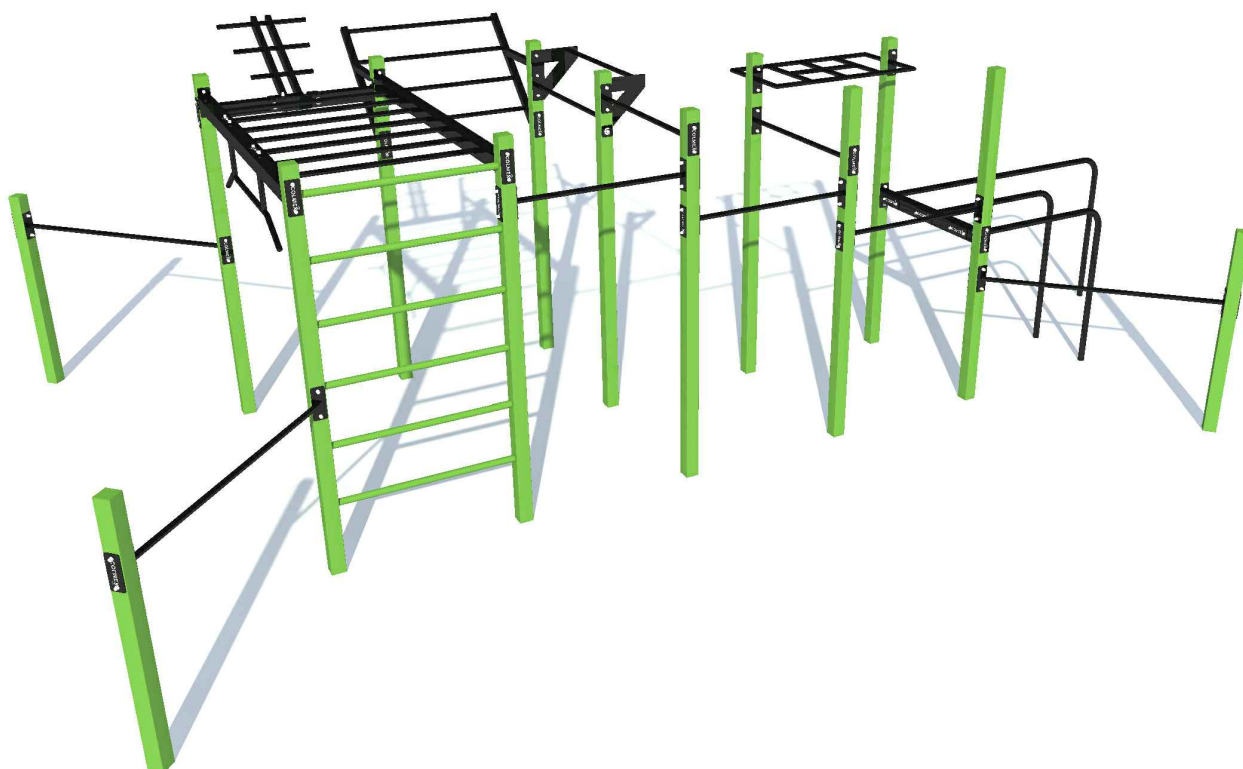


## MODULAR SYSTEM 100% CZECH PRODUCTS

### STREET WORKOUT WO 01 California



#### General information on street workout:

**Product type:** Fitness, stretching, exercise & workout.

**Application:** Workout is a permanently installed and freely accessible fitness equipment intended for sporting activities and exercising to improve physical and mental skills and abilities of users. Users may use the equipment with or without supervision and help of others.

**Users:** In accordance with the applicable DIN EN 16630:2015, workout systems may be used by people with a minimum height of 140 cm and maximum weight of 120 kg. Other than intended use is strictly prohibited.

**Safety instructions:** While using the workout system, follow the instructions shown in the information boards on the equipment. Exercise slowly and in a controlled way. Physical issues may occur in case of excessive load. In case of any doubts, consult the training or individual exercises with your physician to make sure there are no obstructions preventing from safe use of the workout system. Avoid overload of individual parts of the system and do not use the system if the surface is covered by frost, slippery, hot or the equipment is visibly damaged.

Product number	WO-01
Maximum load	120 kg/person
System area	8200 x 4900 x 2700
Movement area	11200 x 7900
Free fall height	1500 to max. 2200
System instalation	6 persons, 12 hours
Type of anchorage	Pursuant to installation manual.

All values are stated in millimeters



Visualizations are illustrative only.  
The right for changes is reserved.

**STREET WORKOUT**

WO 01 California

**PRODUCT INFORMATION**

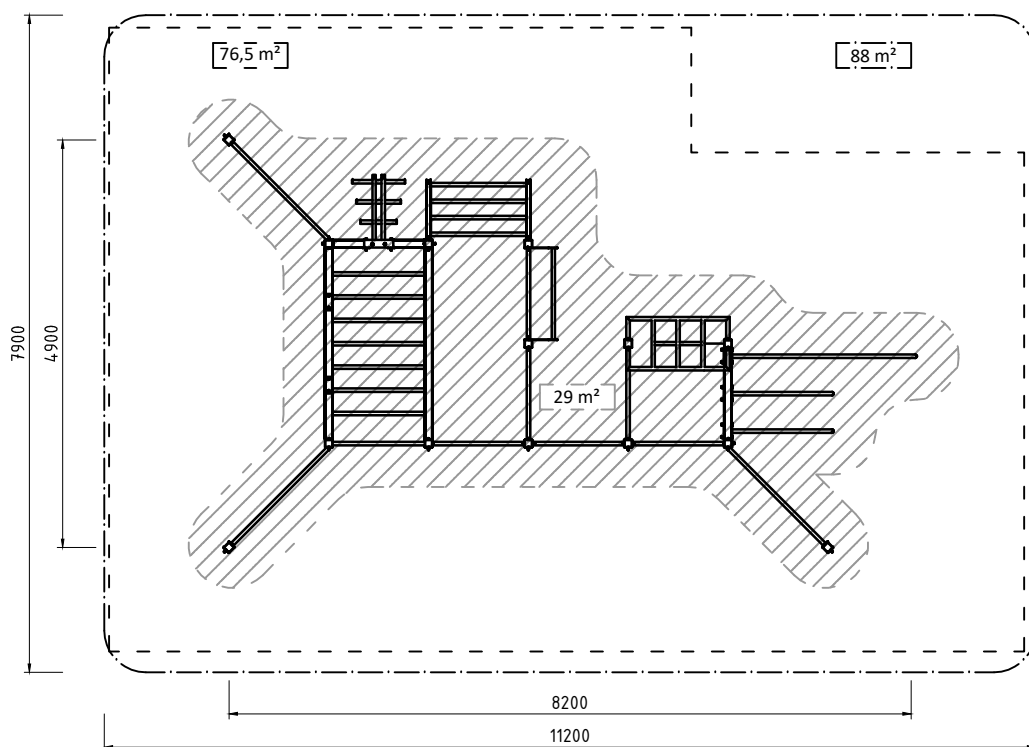
COLMEX STREET WORKOUT is a certified Czech product - a modular system that can be further extended.

<b>Product code:</b>	WO 01 California
<b>Product range:</b>	WO, Street workout
<b>System area:</b>	8200 x 4900 x 2700 mm
<b>Movement area:</b>	11200 x 7900 mm
<b>Free fall height:</b>	1500 to 2200 mm (maximum height - on one side of the system only)
<b>Type of anchorage:</b>	Type (B) for direct concreting, (P) for installation to the solid ground.
<b>Base specifications:</b>	Pursuant to requirements stipulated in DIN EN 16630:2015 Peel, chips, sand, aggregate, rubber etc. for fall height $\leq$ 3000.
<b>Number of modules:</b>	17
<b>Minimum user height:</b>	140 cm, pursuant to requirements stipulated in DIN EN 16630:2015.
<b>Maximum load:</b>	120 kg/person unless otherwise indicated.
<b>Delivery term:</b>	Available in stock, version (B) in standard color combinations. Remaining sets are available upon request.
<b>Turn-key installation:</b>	6 persons, 12 hours
<b>Installation method:</b>	Version (B) for direct concreting and (P) for installation to solid surface.
<b>Customer installation:</b>	Yes, in accordance with a detailed installation instructions.
<b>Materials:</b>	Thick-walled Jäkl profile 90 x 90 x 3 mm . (100 x 100 x 4 for XL version); thick-walled tubes $\varnothing$ 33 to 42.
<b>Surface finish:</b>	Powder painting - Komaxit, special version for exterior. Hot dip galvanization at extra cost.
<b>Color:</b>	Optional (RAL)
<b>Recommended combinations:</b>	3003 red, 5015 blue, 4008 violet, 6018 green vs. 9005 black.
<b>Certifications, standards:</b>	EN 16630:2015 Permanently Installed Outdoor Fitness Equipment - Safety Requirements and Test Methods

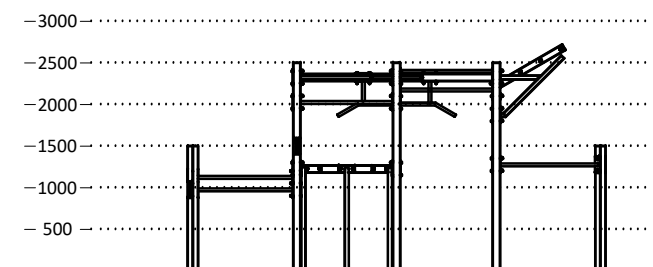
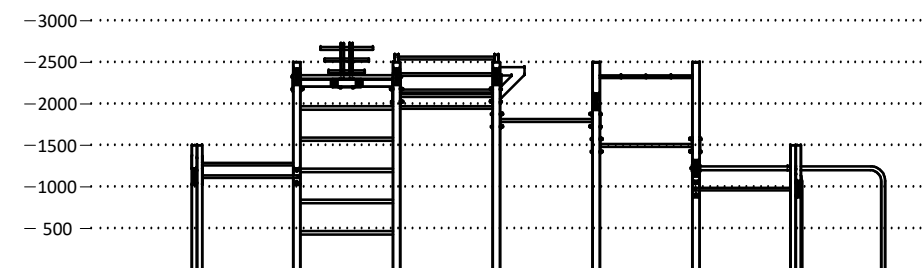
## STREET WORKOUT

WO 01 California

AREA FOR PRACTICE/AREA FOR MOVE



## HEIGHT



STREETWORKOUT

**MODULAR SYSTEM**  
**100% CZECH PRODUCTS**

## STREET WORKOUT

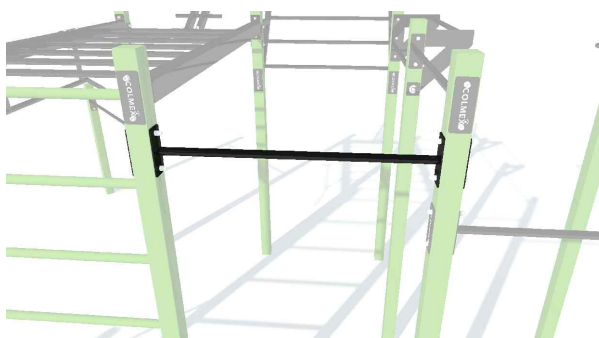
### WO 01 California

### WORKOUT EQUIPMENT

INCLINED HORIZONTAL BAR



HORIZONTAL BAR



CENTRAL HORIZONTAL BAR



LARGE HORIZONTAL BAR



HORIZONTAL LADDER



VERTICAL LADDER



STREETWORKOUT

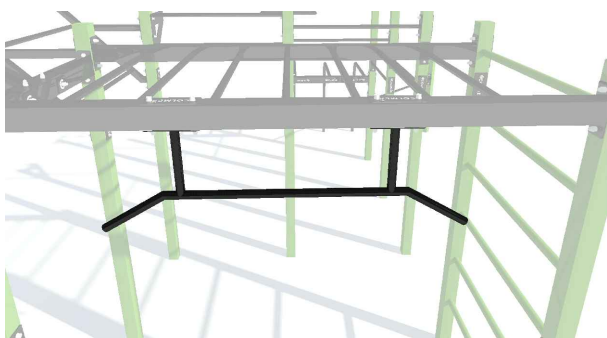
**DID YOU KNOW THAT...**  
*we are one of the leading manufacturers and suppliers in the market.*

## STREET WORKOUT

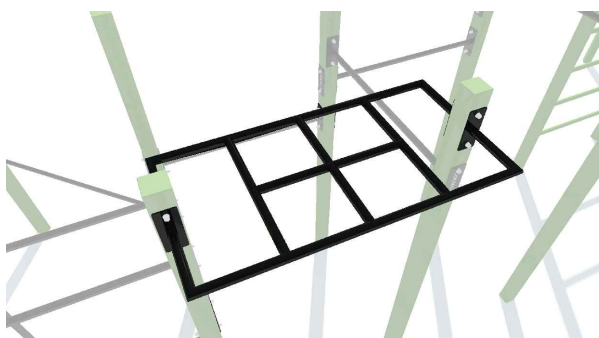
### WO 01 California

### WORKOUT EQUIPMENT

SUSPENDED HORIZONTAL BAR



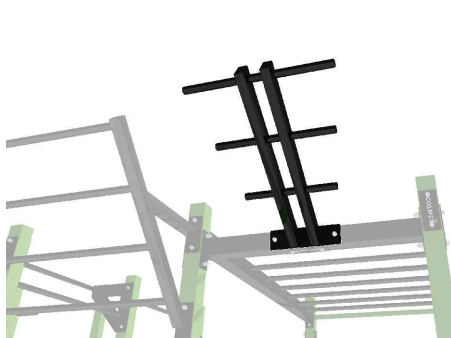
TWIST



PARALLEL BARS, EXTENDED



MULTIFUNCTION



STREETWORKOUT

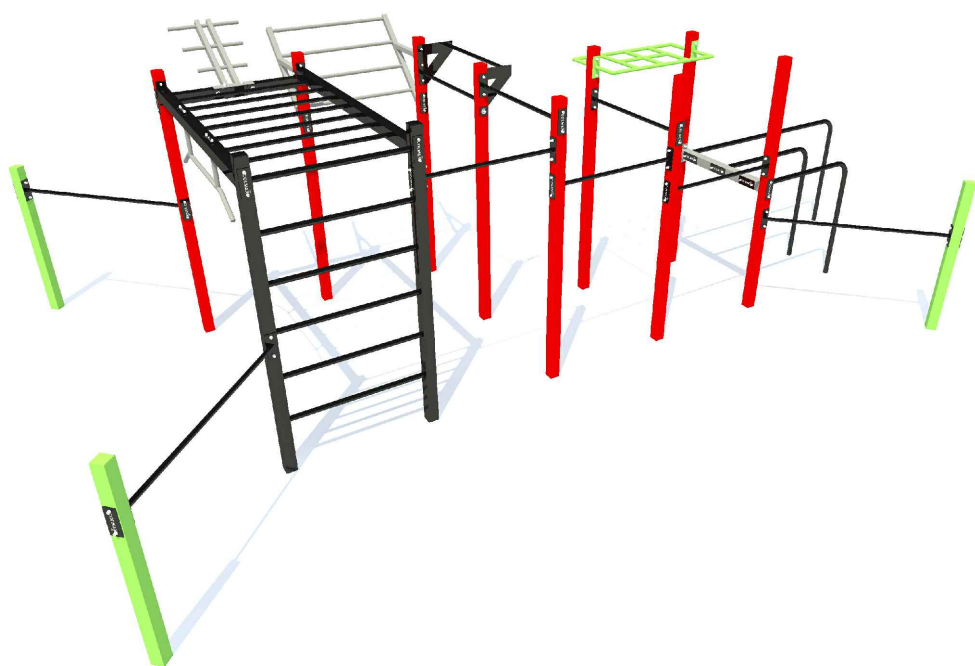
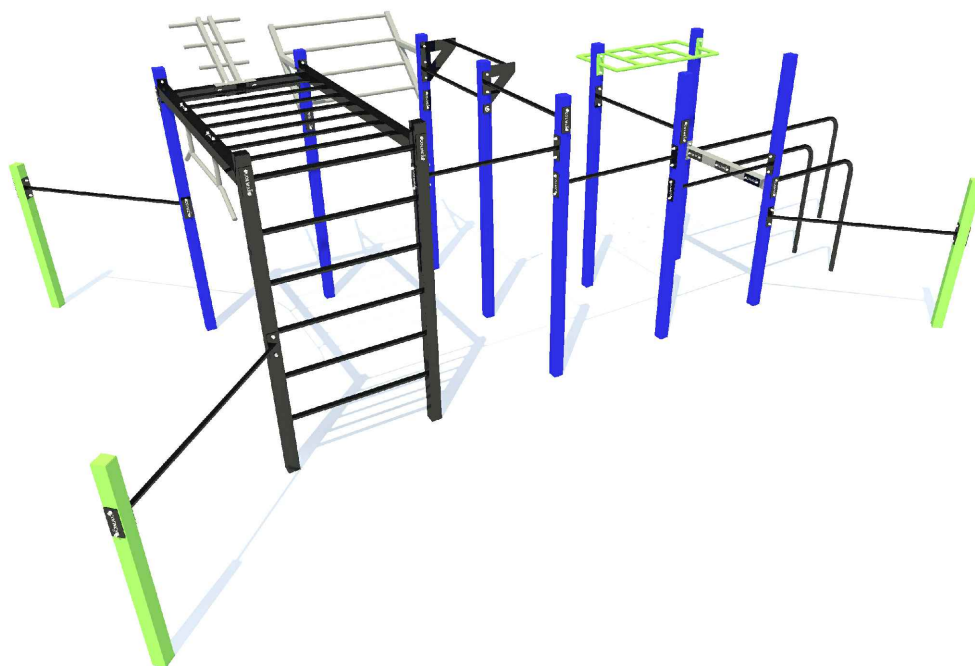
**DID YOU KNOW THAT...**

*individual elements of the workout system may be changed/combined according to your requirements.*



**MODULAR SYSTEM**  
**100% CZECH PRODUCTS**

**STREET WORKOUT**  
**WO 01 California**  
**COLOUR POSSIBILITIES**



**WORKOUT SYSTEM COLORS**  
*may be adapted to your individual wishes.*

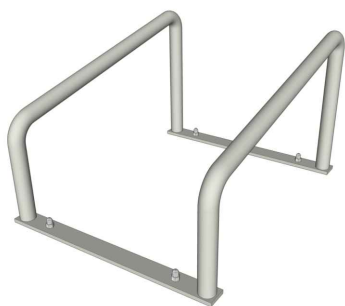
STREETWORKOUT

## STREET WORKOUT

WO 01 California

## WORKOUT ACCESSORIES AND SUPPLEMENTS


### PUSH UP STAND



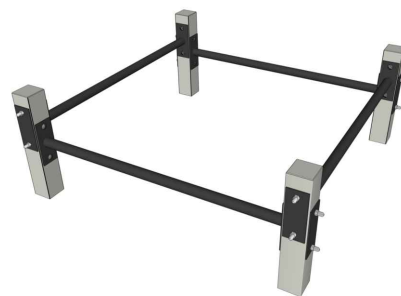
 WO-2102

### HORIZONTAL BARS



 WO-2103

### HORIZONTAL BARS



 WO-2104

### BALANCING BEAM



 WO-2106

### T PIECE



 WO-2110

### KUGEL



 WO-2111

### STEP



 WO-2112

### BENCH



 WO-2802

### RINGS



 WO-2701

**FOR EACH SET**

*we have various accessories and equipment to make the best of your workout park.*